



Alvin Roth, PhD

Director

*Economist, Applied Game Theory
Professor of Economics, Stanford
Expert on market design
Nobel prize winner in Economics, 2012*



Guy Halfteck

Founder, CEO

*Harvard University, SJD
Columbia University, LLM
Hebrew University, LLB
Vice Commander, Israel Naval Forces*



John Funge, PhD

CTO, Co-founder

*Director of Engineering, Netflix (former)
Toronto University, PhD (Computer Science)
Oxford University, MSc (Computation)
King's College, London, MSc (Math)*



Christopher Chabris, PhD

Director of R&D

*Psychology Professor, Union College
Researcher, Center of Collective Intelligence, MIT
Harvard University, PhD (Cognitive Psychology)
Harvard University, AB (Computer Science)
Author, *The Invisible Gorilla**



Jeremy Gray, PhD

Senior R&D Scientist

*Professor of Cognitive Neuroscience, Michigan
Professor of Cognitive Psychology, Yale
Harvard University, PhD (Cognitive Psychology)
UC Santa Cruz, BS (Cognitive Neuroscience)*



Thomas Jerde, PhD

Senior Data Scientist

R&D Manager

*Brown University, BS (Neuroscience)
Brown University, BA (Music, Philosophy)
Harvard University, Researcher (Neuroscience)
Stanford University, MS (Neuroscience)
Stanford University, PhD (Neuroscience) (on leave)
NSF/NIH National Research Service Award*

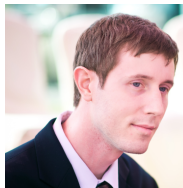




Ivan Bogdanov
Lead Software Engineer
Lead Engineer, Salesforce.com
Senior Software Engineer, Cisco
Moscow State University, BSc (Computer Science)



Steve Woyach
Project Manager
Game Designer
USC, BS (Computer Science)
Producer, Liquid Entertainment
Teaching Assistant, Video Game Design, USC



Jacob Juan
Visual Designer
Game Artist
University of Texas, BA (Economics)
Academy of Arts University (Art)
Lead Modeler and Artist, Anatomy Tools
Lead Artists, Shattered Reality Interactive



Sherri Flippo, SPHR, CEP
Chief of Staff
UCLA, BA (Economics)
Office Manager, Suitable Technologies
Office Manager, HR Manager, AiLive



Erik Brynjolfsson, PhD
Big Data Advisor
Professor of Management, MIT Sloan
Director, MIT Center for Digital Business
MIT, PhD (Managerial Economics)
Author, The Second Machine Age: Work, Progress, and Prosperity in a Time of Brilliant Technologies



Mark Howorth
Business Advisor
Chief Operating Officer, Panavision
Partner, Bain & Company
Senior Director, Global Recruiting, Bain & Company
CEO, National Mobile Television
Harvard, MBA; Berkeley, BS





Christopher Carroll, PhD

Data Scientist

UCLA, PhD (Cognitive Psychology)

UCLA, MA (Cognitive Psychology)

Carnegie Mellon, BS (Cognitive Science)

Post Doctoral Fellow, Carnegie Mellon



Scott Williams

Head of Product Engineering

Senior UX Designer, Netflix

VP Engineering, Hot Shot Media

Senior Software Architect, Adobe

Senior Software Architect, HP

