

Employee launch kit

Carry bag

Note pad

Stickers

cap

gift wrap

Cap

Fun@Work Calender

A short story on how we make money and spend money

bag



Note pad – 6 levers



A vertical note pad with a light blue background and horizontal lines. At the top right, there is a logo with the letters 'US' in a stylized font, surrounded by a glowing purple and pink aura. At the bottom left, there is a small cartoon character of a person in a blue uniform with a white hat. To the right of the character is the text 'RESPONSIBILITY AND OWNERSHIP' followed by a list of attributes: 'Be accountable', 'Be committed to quality', 'Be dependable', 'Be self-motivated', and 'Be ready to empower'.

US

RESPONSIBILITY AND OWNERSHIP
Be accountable | Be committed to quality | Be dependable | Be self-motivated | Be ready to empower



A vertical note pad with a light blue background and horizontal lines. At the top right, there is a logo with the letters 'US' in a stylized font, surrounded by a glowing purple and pink aura. At the bottom left, there is a small cartoon character of a person in a blue uniform with a white hat. To the right of the character is the text 'WALK THE TALK' followed by a list of attributes: 'Be action oriented', 'Be a leader by example', 'Be a practitioner not a preacher', 'Be professional', and 'Be an inspiration'.

US

WALK THE TALK
Be action oriented | Be a leader by example | Be a practitioner not a preacher | Be professional | Be an inspiration



A horizontal card with a light blue background. On the left is a small cartoon character of a person in a blue uniform with a white hat. To the right of the character is the text 'CUSTOMER FOCUS' followed by a list of attributes: 'Be helpful', 'Be innovative', 'Be prompt and courteous', 'Be simple and clear', and 'Be sincere'.

CUSTOMER FOCUS
Be helpful | Be innovative | Be prompt and courteous | Be simple and clear | Be sincere



A horizontal card with a light blue background. On the left is a small cartoon character of a person in a blue uniform with a white hat. To the right of the character is the text 'TRUST' followed by a list of attributes: 'Be liberal with information', 'Be open minded', 'Be straightforward', 'Be transparent', and 'Be true to promise'.

TRUST
Be liberal with information | Be open minded | Be straightforward | Be transparent | Be true to promise



A horizontal card with a light blue background. On the left is a small cartoon character of a person in a blue uniform with a white hat. To the right of the character is the text 'CONSTRUCTIVE CHALLENGE' followed by a list of attributes: 'Be courageous', 'Be firm', 'Be eager to improve', 'Be objective', and 'Be open to criticism'.

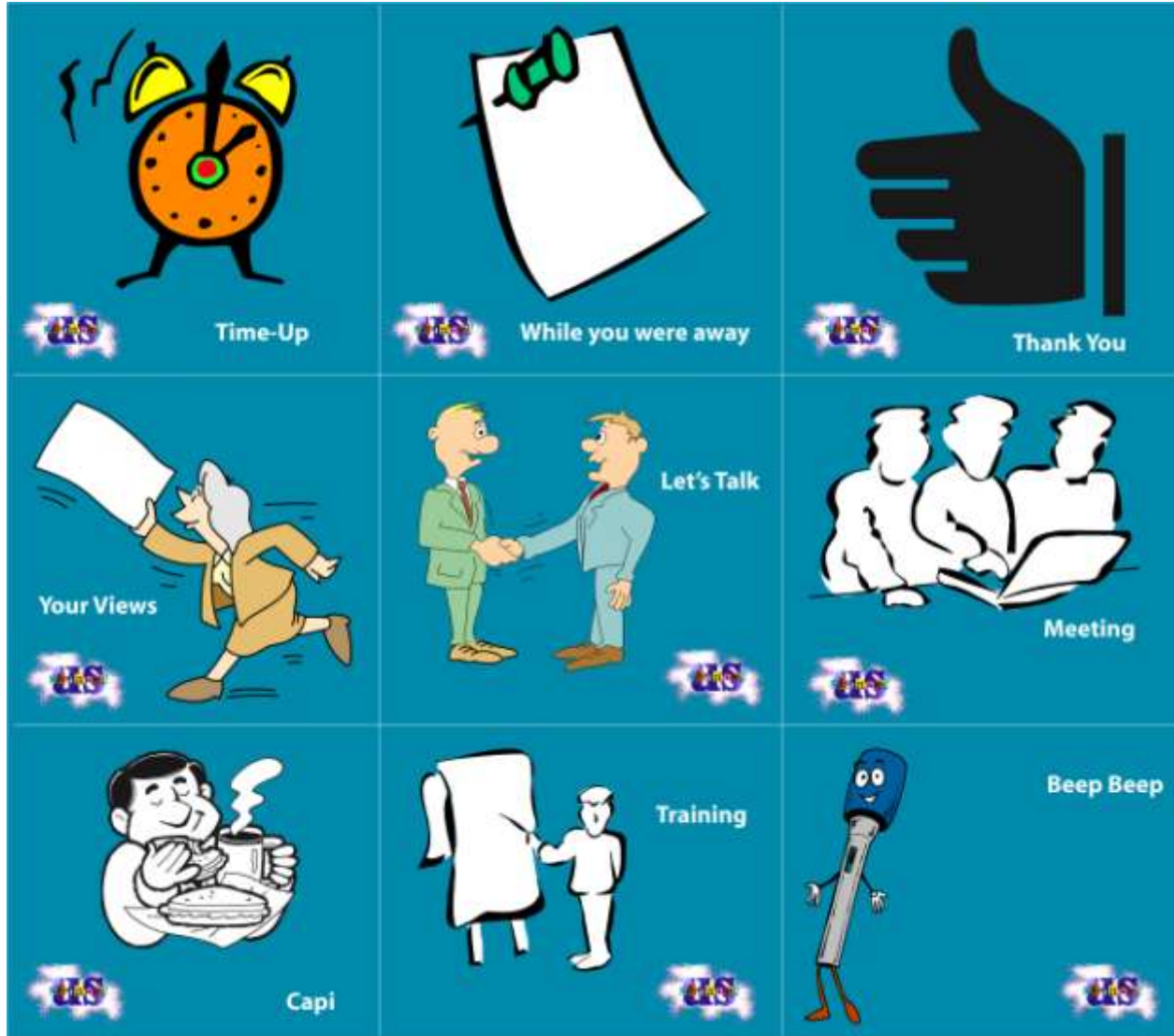
CONSTRUCTIVE CHALLENGE
Be courageous | Be firm | Be eager to improve | Be objective | Be open to criticism



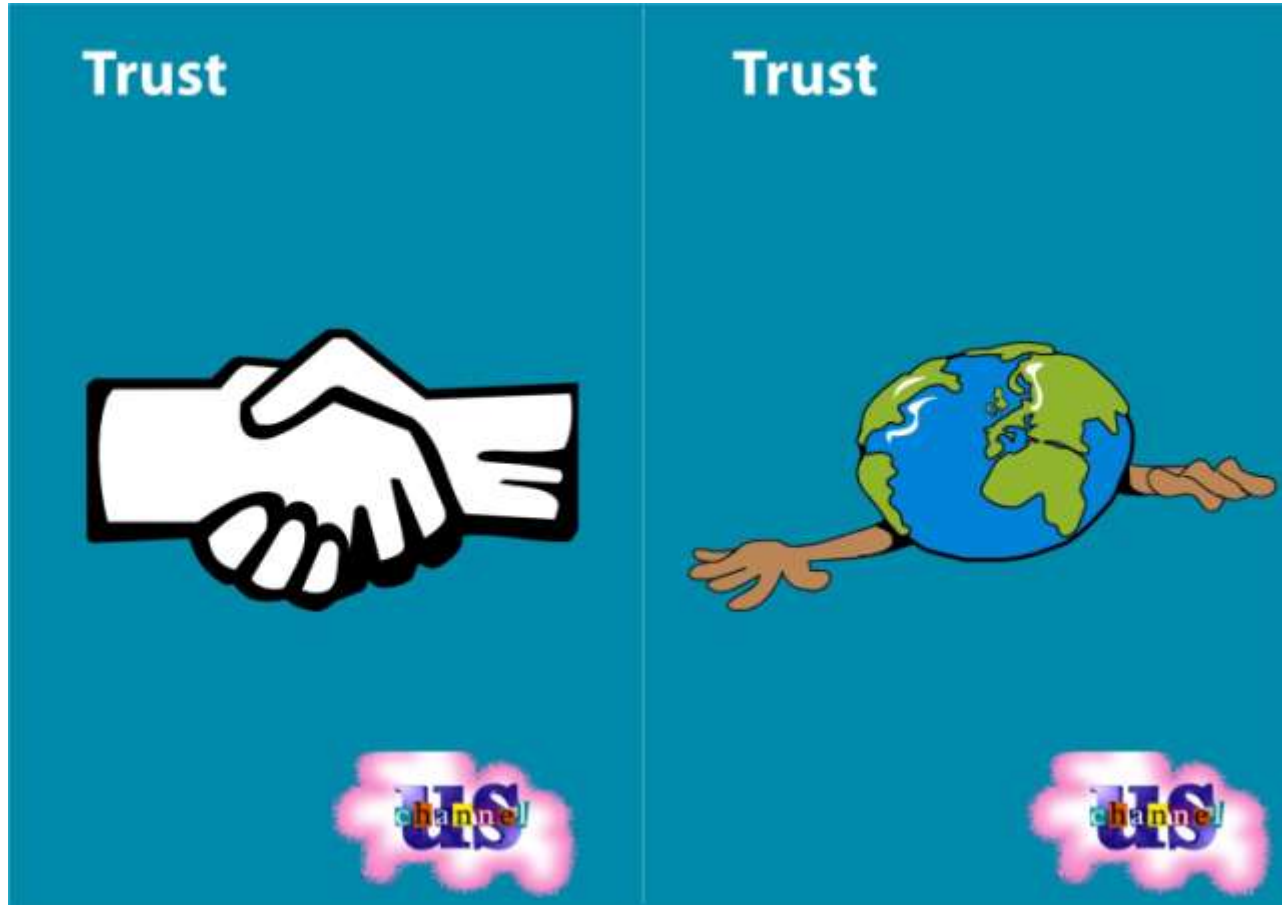
A horizontal card with a light blue background. On the left is a small cartoon character of a person in a blue uniform with a white hat. To the right of the character is the text 'TEAM WORK' followed by a list of attributes: 'Be appreciative', 'Be cheerful', 'Be company focused', 'Be cooperative', and 'Be passionate'.

TEAM WORK
Be appreciative | Be cheerful | Be company focused | Be cooperative | Be passionate

Stickers 9 nos



Stickers levers 1



Stickers levers 2

Team Work



channel
US

Team Work



channel
US

Stickers levers 3

Customer
Focus



channel
US

Customer
Focus



channel
US

Stickers levers 4

Constructive Challenge



Constructive Challenge



Stickers levers 5

Responsibility and Ownership



channel
US

Responsibility and Ownership



channel
US

Stickers levers 6

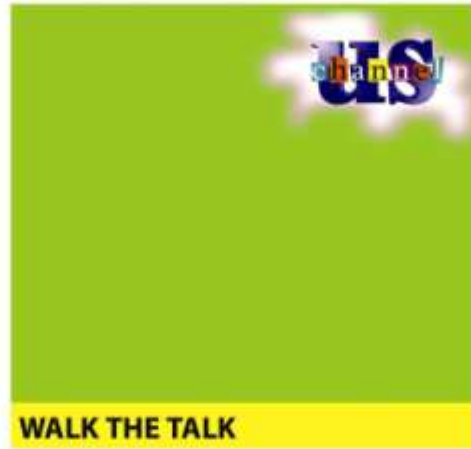
Walk the Talk



Walk the Talk



Post-its 6 levers



Cap



Coasters 6 levers



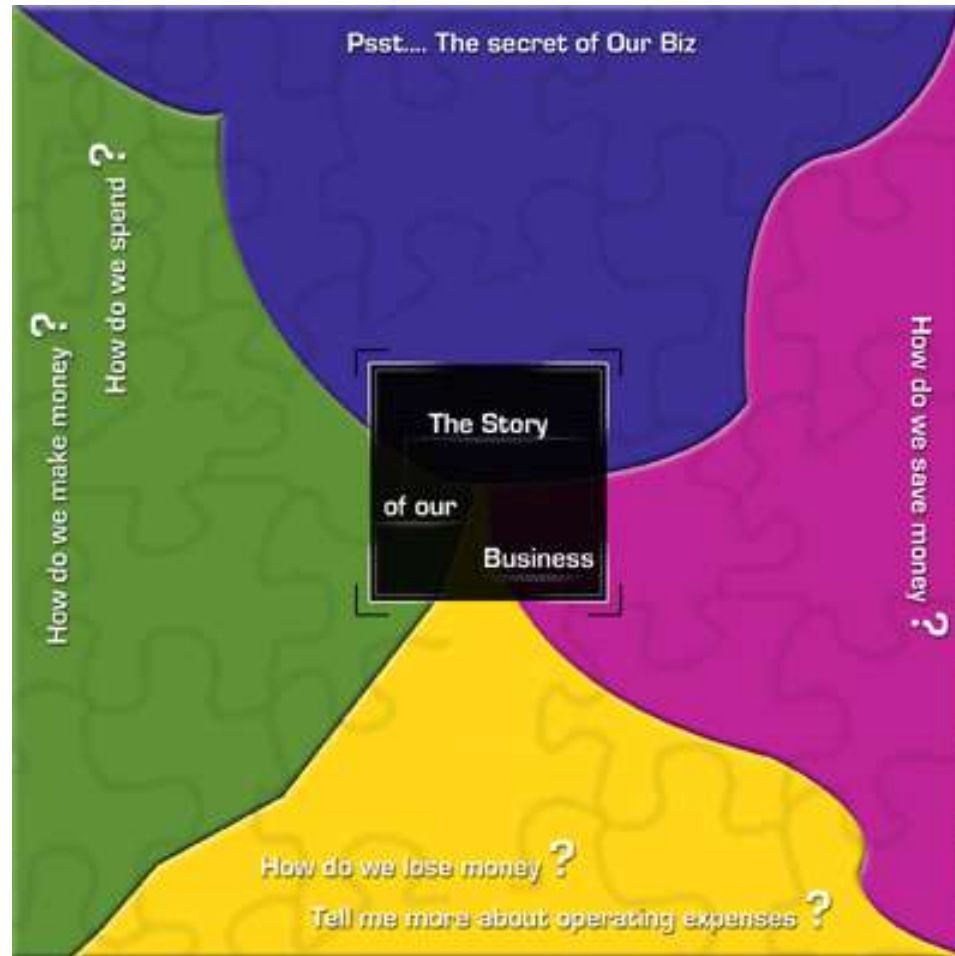
Mouse pad



Planner



The story of our Business



Gift wrap

